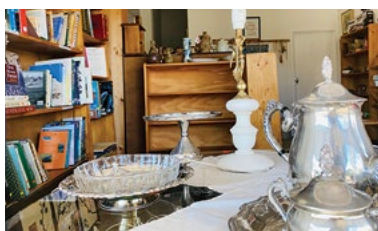




VISITOR GUIDE



Explore Yarriambiack



MINYIP:

The Minyip township was established in the early 1870's and flourished as a service centre for this productive wheat growing district for over a century.



In 1984, Minyip was featured as the town "Coopers Crossing" in the long running television series *The Flying Doctors* by Crawford Productions of which production ceased in 1989. Adding to the list of TV fame, Minyip recently featured in the mystery thriller film, *The Dry* directed by Robert Connolly and starring Eric Bana.

Take your time to find Minyip's Heritage Plaques located on buildings around town. The plaques detail the business, cultural, spiritual, health and education heritage of this vibrant rural community landscape.



Fuel pumps outside Emma's Place; the Club Hotel (as seen in the movie, 'The Dry' and 'The Flying Doctors' series); signage information of Buloke Woodland at the Bushland Reserve; outdoor area at Emma's Place.

Explore

- **Bushland Reserve** contains a 700m and 2km walking track. The track also identifies a number of native plants and is a popular site for bird watching.
- **Caravan park & Wetlands** is a five hectare site located on the edge of town, complete with native trees and shrubs, including the rare Wimmera Rice Flower. There are picturesque walking tracks, outdoor fitness equipment, plus the provision for BBQ and picnic facilities, fire pit, a modern amenities block and powered camp sites. Pets welcome.
- **Cemetery** is located 5km east of the town and reflects the strong German influence early in Minyip's establishment and holds great interest for those interested in genealogy and history.
- **Farrer Monument**, believed to be the only monument of its kind in Australia to William Farrer, the 'Father of the Australian Wheat Industry'.
- **Main Street** has many of the buildings featured in The Flying Doctors series: Royal Flying Doctor Service Base, Emma's Garage, Coopers Crossing Memorial Hall and the Pub (now known as the Club Hotel). All featured prominently in many episodes.
- **Minyip/Rupanyup Community Bank** was the first enterprise of its kind in Australia. The profits are shared between the Bendigo Bank and Minyip and Rupanyup communities.
- **Saddler's Second Chance Pre Loved Goods** is a haven for bargain hunters. Check them out on Facebook for opening times.

Bargains at Saddler's; seating shaded by grape vines; photographs of stars from The Flying Doctors.



Community Bank · Minyip

Australia's 1st Community Bank



Rupanyup/Minyip Community Bank Branches



- The **WWI Memorial Wall** honours 355 veterans from the immediate locality who volunteered their services to 'King and Country', including one woman who enlisted as a Staff Nurse. Seventy one souls gave their lives to protect the freedoms we know today.
- **St John's Lutheran Church** features a striking octagonal belfry and houses a magnificent Fuller pipe organ. The organ was classified by the National Trust in 1974.



Community Bank Minyip town mural; Minyip Primary School grounds; Minyip town entrance signage; St John's Lutheran Church.

Yarriambiack Silo Art Trail



'The Flying Doctors' painted mural in the Main Street of Minyip; Dunmunkle Lodge, aged care accommodation; treats at the Café in Emma's Place.

Explore MINYIP



ACCOMMODATION

- 1 Minyip Hotel
- 2 Minyip Caravan Park

CHURCHES

- 2 St John's Lutheran Church
- 3 Catholic Church

SCHOOLS

- 4 Kindergarten
- 5 Minyip Primary School

FACILITIES

- 6 Post Office / Chemist / Butcher / DMS Office
- 7 Community Bendigo Bank
- 8 Emma's Place – Café; Garage, Library & Farrer Monument
- 9 Medical Centre
- 10 Supermarket

ATTRACTIONS

- 11 Historical Society & Town Square
- 12 Memorial Hall & Old Post Office
- 13 Senior Citizens Centre
- 14 Walking Tracks
- 15 Wetlands, Playground & Caravan Park

SPORT

- 16 Bowling Club
- 17 Netball Court, Cricket & Football Oval
- 18 Tennis Courts
- 19 Minyip Field & Game

COMMUNITY FACILITIES

- 18 Public Toilets
- 20 Lions Park Playground
- 21 Minyip Recreation Reserve: Swimming Pool, Community Centre, WWI Memorial Wall
- 22 Police Station
- 23 24hr Fuel Station
- 24 Minyip Cemetery



To DIMBOOLA and WARRACKNABEAL

Stawell Warracknabeal Rd

Loats Rd

Mount Pleasant Rd

MINYIP CEMETERY 5KM
Donald Murtoa Rd
To DONALD

Coutts Rd

Church St

Mill St

Church St (Stawell Warracknabeal Rd)

Petering St

Market St

Main St

(Donald Murtoa Rd)

DUNMUNKLE LODGE

MEN'S SHED

RECREATION RESERVE

L. Pleach Rd

Mill St

Fleet St

15

13

6

16

18

12

10

7

8

17

21

20

11

1

4

16

17

18

Station St

Loats St

Main St

4

5

11

1

2

16

17

18

Donald Murtoa Rd
To MURTOA and HORSHAM

C. Leach Rd

Wimmera St

Foundry St

South St

Carroll St

Morris St

Phillips St

Mill St

Church St

Johnston Rd

R. Learmonth Rd

Minyip Rich Avon Rd

To RUPANYUP and STAWELL

Golf Rd


Stawell Warracknabeal Rd


GOLF CLUB



 minyip.com.au

Population: approx. 524

 visitwimmeramallee.com.au

 [Wimmera Mallee Tourism](#) | [Yarriambiack Tourism](#)

 [Minyip - What's On?](#) | [Visit Minyip](#)

Free Call: 1800 065 647



Edit: December 2023

