

HOPETOUN

Victoria

VISITOR GUIDE



Explore Yarrambiack

HOPETOUN:

Located in Victoria's Southern Mallee on the Henty Hwy, this surprising township is renowned for the famous community run enterprise, the 'Mallee Bush Retreat' on the foreshore of Lake Lascelles.



Hopetoun is a stones throw away from the Wyperfeld National Park that can be accessed via Yaapeet or Patchewollock.

The Walk & Drive Tour is available from Gateway BEET and outlines four scenic self guided walking tours and a drive tour. The BEETroot Market is held on the third Sunday of every month outside Gateway BEET.



Views of Lake Lascelles; Silo accommodation at the Mallee Bush Retreat; Hopetoun Memorial Hall; Hopetoun's Bow Bakery; collage of 'old and new' Hopetoun street

Explore

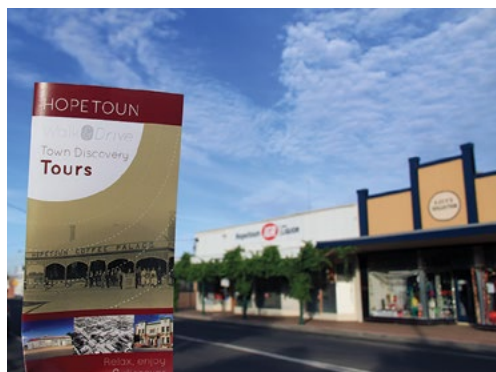
- **Corrong Homestead** was built by the Mallee's first settler Peter McGinnis and is believed to be the oldest original house in the Mallee.
- **Dr Pete's Park** features a huge mural depicting pioneer heritage and 200 varieties of birds and wildflowers found within the surrounding National Parks and Reserves.
- **Lake Corrong** is filled by the Yarriambiack Creek and is a haven for a variety birds and a popular fishing hotspot. The Lake is 660 hectares in size and can hold 17,200 megalitres. There is an 11km walking track for nature lovers. Lake Corrong is usually dry and can be accessed via the Henty Highway, Two Mile Road or the Eastern side of Lake Lascelles.
- **Lake Lascelles** is walking distance from the town centre and is the perfect location for water sports and fishing. Facilities include BBQ's, shelters, amenities, jetty and boat ramp.
- **Mallee Bush Retreat** provides a range of accommodation options based on unique designs including 2 Silos, 2 Cow Sheds, Stables, 2 Machinery Sheds, Shearer's Hut and a Limestone Grain Store with 42 beds available. Powered sites are offered at a low cost and free camping is encouraged around the Lake perimeter. T. 0439 529 973 for reservations.

Below: Fun times at Lake Lascelles; Hopetoun butcher; Lake Corrong Station Pioneer Cemetery plaque information



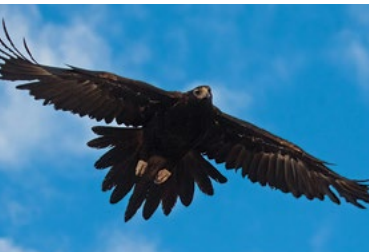
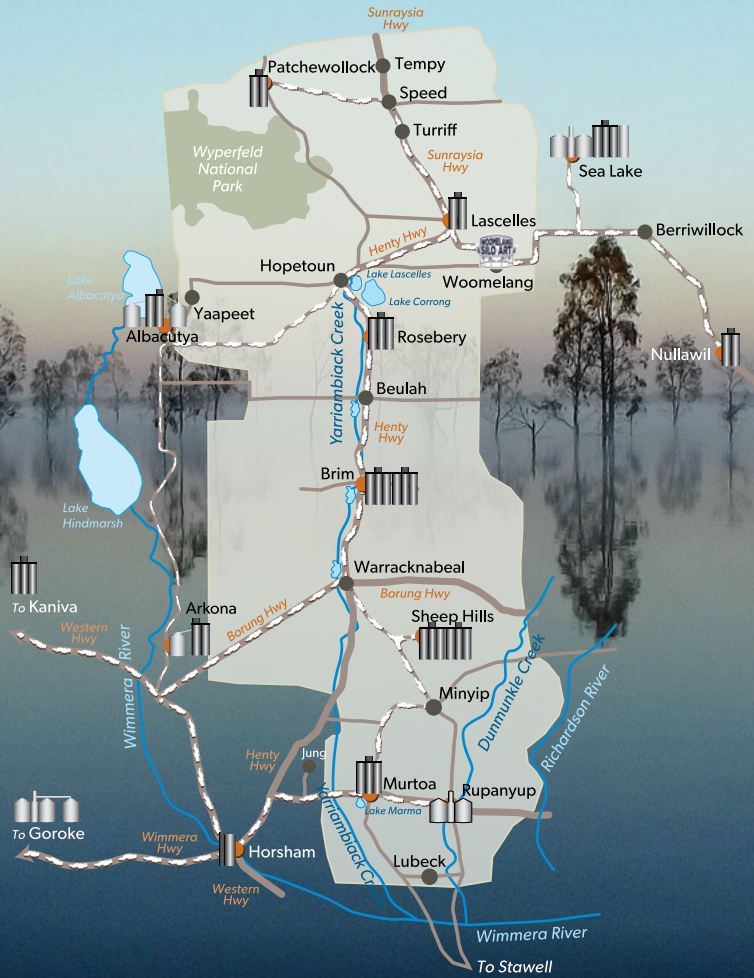


- **Hopetoun Community Op Shop** is open to treasure hunting enthusiasts. Bag a bargain and help out our local community.
- **Silo Art Trail** is Australia's largest outdoor gallery. Hopetoun is a great base for exploring the gigantic artworks in Patchewollock, Lascelles, Rosebery, Brim, Sheep Hills and Rupanyup. The Silo Art Trail now also extends to Albacutya, Sea Lake, Nullawil, Kaniva and Goroke.



Walk & Drive Town Discovery Tours guide; unique facilities at the Mallee Bush Retreat; Corrong Homestead

Yarriambiack Silo Art Trail



Sunrise views of Lake Carrong (photograph courtesy of Jessica Magee); Wedge-tailed eagle in flight; Hopetoun street art by Kaffeine



ACCOMMODATION DETAILS

Caravan Park Cabins: 0416 160 337
 Cobblers Cottage Airbnb
 Cottage on the Corner: 0416 160 337
 Hopetoun B&B: 0429 833 430
 Hopetoun Caravan Park: 0417 237 587
 (03) 5083 3001
 Hopetoun Community Hotel: (03) 5083 3070
 Lake Lascelles – Free camping on unpowered sites
 – Powered sites available
 Mallee Bush Retreat: 0439 529 973
 Power House & Art Studio: 03 5083 3001
 Robins Nest Airbnb

ACCOMMODATION

- Caravan Park
- 1** Community Hotel/Motel
- 2** Mallee Bush Retreat
- 3** Power House Accommodation & Art Studio
- Lake Lascelles camping

SCHOOLS

- 4** Hopetoun Preschool
- 5** Hopetoun F-12 College
- 6** St Joseph's Catholic Primary School

FACILITIES

- 7** Post Office
- 8** Bakery
- 9** Café/Butcher
- 10** Café
- 11** Opportunity Shop
- Medical Centre
- 12** Supermarket & Public Toilets

ATTRACTIONS

- 13** Gateway BEET & Tourist Information
- 14** Corrong Homestead
- 15** Dr Pete's Park and Mural
- 16** Hopetoun House
- 17** Lake Lascelles
- 18** Lake Corrong Access Track

SPORT

- 19** Bowling & Tennis
- 20** Golf Club & Mini Golf

COMMUNITY FACILITIES

- Public Toilets
- 21** Poulton Park, Playground, Swimming Pool, Toilets, BBQ
- 22** Caravan Waste Dump Point
- 23** Hopetoun Cemetery
- 24** Pioneer Cemetery
- Police Station
- 24hr Fuel Stations

Explore
HOPETOUN

To RAINBOW
 (HOPETOUN RAINBOW RD)

To WARRACKNABEAL
 and HORSHAM




 hopetounvictoria.com.au


 Gateway BEET & Tourist Information (03) 5083 3001

e info@gatewaybeet.com.au

Population: approx. 739

 visitwimmeramallee.com.au

 Wimmera Mallee Tourism | Yarriambiack Tourism

 **Free Call:** 1800 065 647



Edit: December 2023

