

Southern Operations Program



(Version 3.0)

Approved by Chief Executive Officer

12 March 2025



Yarriambiack
SHIRE COUNCIL

Contents

1	Minyip	1
2	Murtoa	5
3	Rupanyup	9
4	Lubeck	13

SUMMARY	
Total Town Maintenance Hours	225.75 per week
Total Travel Hours	0.5 hours per week
Total Weekly Hours	226.25 per week
Equals – Total Staffing Level (no. FTE)	6 FTE (6 staff members)

Six staff members required to undertake Southern Works Operations Program.

When staff are on leave this can significantly impact service delivery levels and the program.

Operations Program – Southern Works

Yarriambiack Shire Council encourages a working environment which promotes gender equality and models non-violent and respectful relationships.

1 Minyip

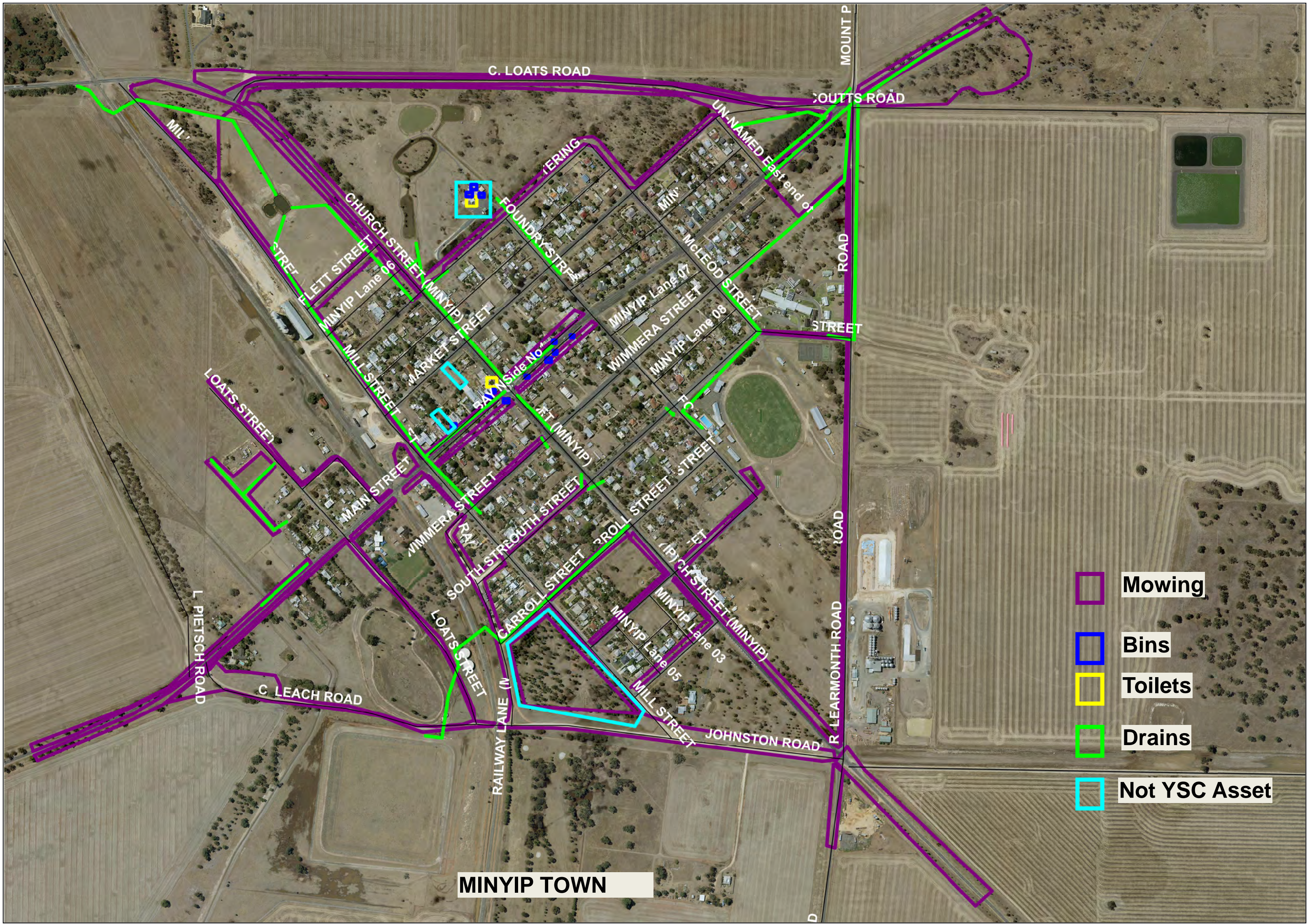
People	Families	Dwellings
525	136	288

Service	Qty	Location	Tasks Undertaken	Time Limit	Frequency	Service Standard
Playgrounds	2	Lions Club (Not YSC Asset) Caravan Park (Not YSC Asset)	<ul style="list-style-type: none"> Safety inspections Spraying Mowing Softfall top up Rubbish collection Inspection and collection of dog feces, cigarette butts, glass, limbs and shrubs 	1 hours (0.25 hours)	1 x per month (per week)	Council does not own these playgrounds, therefore Council does not undertake the safety inspections.
Parks	1	Outside Gregson Park (Not YSC Asset)	<ul style="list-style-type: none"> Mowing Spraying Weeds Loose rubbish pick ups 	2 hours	1 x per week.	Gregson Park – Mill Street, mow around the outside of the park. We don't mow the inside of the park.
Street Beautification	1	Township Streets	<ul style="list-style-type: none"> Mowing Mowing YSC / leased vacant blocks and/or land 	12.5 hours	1 x per week	Major: Storm damage; Complaints/Requests Minor: Ongoing Maintenance

Service	Qty	Location	Tasks Undertaken	Time Limit	Frequency	Service Standard
			<ul style="list-style-type: none"> Spraying Tree trimming Over hanging vegetation Street furniture-maintenance Roundabouts 			
Public Amenities	2	Main Street (YSC Asset)	<ul style="list-style-type: none"> Cleaning Spraying 	2 hours	5 x per week	Note, Caravan Park is a weekly check and upon request.
		Caravan Park (Not YSC Asset)	<ul style="list-style-type: none"> Mowing Minor maintenance of amenities 	2 hours	1 x per week (sun)	
Drainage	1	Township <ul style="list-style-type: none"> Entrance from Warracknabeal Behind Dunmunkle Lodge Intersection at Donald-Murtoa Road South-end of Carrol Street Mill Street 	<ul style="list-style-type: none"> Maintenance Culvert cleaning Blockages Stormwater pump inspection stormwater pits 	2 hours	1 x per week	High Protection: Intensely developed business and industrial where flooding would cause serious damage or inconvenience Medium Protection: Developed residential, other business and industrial areas Low Protection: Sparsely populated residential such as parks, playing fields Obstructions in open drains- as required
Street Cleaning	1	Township	<ul style="list-style-type: none"> Street sweeping Bins Gutters Rubbish 	8 hours	1 x per week	Daily cleaning program – commercial district in the larger towns

Service	Qty	Location	Tasks Undertaken	Time Limit	Frequency	Service Standard
						Monthly cleaning program for all other town streets via plant & equipment CRM System and Community Satisfaction
Streetsweeper	1	Township			6 weekly	6 Weekly program in each zone (central, northern and southern)
Council Owned Buildings / Vacant Blocks	2	Senior Citizens Building (YSC Asset) Town Hall rear yard (Not YSC Asset) Town Square Easement off Loat's Street Adjacent railway track at Mill Street	<ul style="list-style-type: none"> • Mowing • Spraying • Weeds / Garden Beds • Minor maintenance 	3.25 hours	1 x per week	
Depots	1	Mill Street	<ul style="list-style-type: none"> • Mowing • Spraying • General Maintenance • Toilets 	1 hours	1 x per week	
Transfer Station	1	Minyip	<ul style="list-style-type: none"> • Pushing up scrap metal and green waste • Mowing • Spraying 	0.5 hours	1 x per week	

Service	Qty	Location	Tasks Undertaken	Time Limit	Frequency	Service Standard
			<ul style="list-style-type: none">General tasks to assist transfer operator	2 hours 3 hours	1 x per week 1 x per week (sun)	Transfer Station Opening Hours: Tuesday 1.30 – 3.30pm, Sunday 8.00am – 11.00am.



MINYIP TOWN

-  **Mowing**
-  **Bins**
-  **Toilets**
-  **Drains**
-  **Not YSC Asset**

2 Murtoa

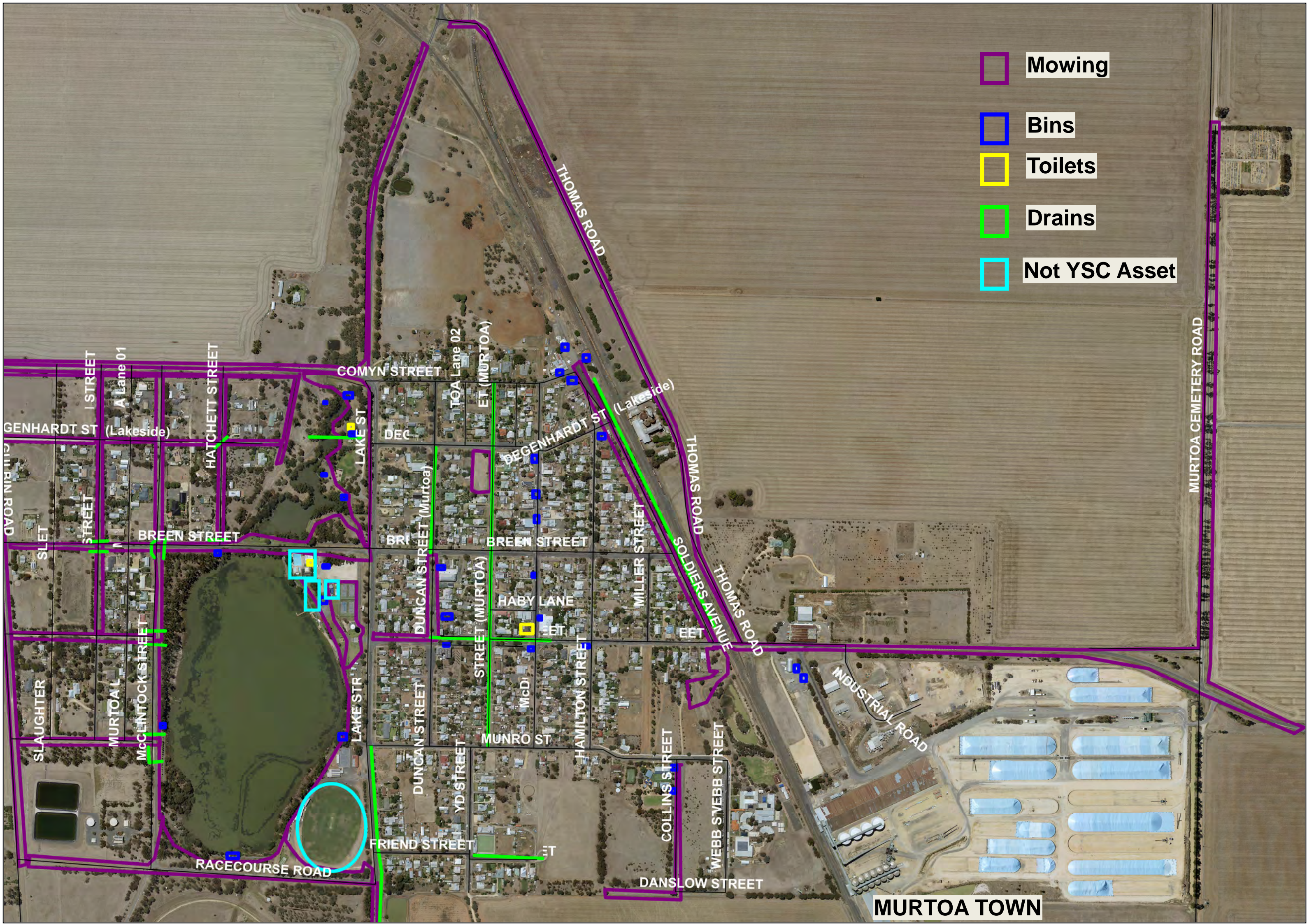
People	Families	Dwellings
780	206	413

Service	Qty	Location	Tasks Undertaken	Time Limit	Frequency	Service Standard
Playgrounds	3	Rabl Park <i>(YSC Asset - CoM)</i> Lake Marma <i>(Not YSC Asset)</i> Recreation Reserve <i>(Not YSC Asset)</i>	<ul style="list-style-type: none"> • Safety inspections • Spraying • Mowing • Softfall top up • Rubbish collection • Inspection and collection of dog feces, cigarette butts, glass, limbs and shrubs 	1 hours	1 x per week	Council does not own the Lake Marma and Recreation Reserve playgrounds, therefore Council does not undertake the safety inspections. Only undertakes the soft fall top up and rubbish pick up/inspections.
Parks	1	Rabl Park <i>(YSC Asset - CoM)</i> Lake Marma <i>(Not YSC Asset)</i>	<ul style="list-style-type: none"> • Mowing • Spraying • Weeds • Loose rubbish pick ups 	16 hours	1 x per week	
Street Beautification	1	Township Streets: <ul style="list-style-type: none"> • Wagon Block, Rupanyup Entrance • Old School Site (housing YSC) • Town Entrances • Thomas Road 	<ul style="list-style-type: none"> • Mowing • Mowing YSC / leased vacant blocks and/or land • Spraying • Tree trimming • Over hanging vegetation • Street furniture-maintenance 	25 hours	1 x per week	Major: Storm damage; Complaints/Requests Minor: Ongoing Maintenance

Service	Qty	Location	Tasks Undertaken	Time Limit	Frequency	Service Standard
		<ul style="list-style-type: none"> Racecourse Road Cemetery Road 	<ul style="list-style-type: none"> Roundabouts 			
Public Amenities	3	Rabi Park <i>(Not YSC Asset – YSC CoM)</i> Marma Street <i>(YSC Asset)</i> Swimming Pool (Public Use) <i>(Not YSC Asset)</i>	<ul style="list-style-type: none"> Cleaning Minor maintenance of amenities 	2 hours 2 hours	5 x per week 1 x per week (sun)	
Drainage	1	Township pits Lake Marma Marma Street Duncan Street Lake Street Cromie Street Friend Street	<ul style="list-style-type: none"> Maintenance Culvert cleaning Blockages Stormwater pump inspection stormwater pits 	5 hours	1 x per week	High Protection: Intensely developed business and industrial where flooding would cause serious damage or inconvenience Medium Protection: Developed residential, other business and industrial areas Low Protection: Sparsely populated residential such as parks, playing fields Obstructions in open drains- as required
Street Cleaning	1	Township	<ul style="list-style-type: none"> Street sweeping Bins Gutters Rubbish 	20 hours	1 x per week	Daily cleaning program – commercial district in the larger towns

Service	Qty	Location	Tasks Undertaken	Time Limit	Frequency	Service Standard
						Monthly cleaning program for all other town streets via plant & equipment CRM System and Community Satisfaction
Streetsweeper	1	Township			6 weekly	6 Weekly program in each zone (central, northern and southern)
Caravan Park <i>(Not YSC Asset – YSC CoM and Sub Lease to Murtoa Progress Association)</i>	1		<ul style="list-style-type: none"> Gutters General maintenance Culvert cleaning Mowing Whippersnipping / spraying Tree trimming Rubbish removal 	3 hours	1 x per week	
Council Owned Buildings / Vacant Blocks	2	Decommissioned Kindergarten <i>(Not YSC Asset Land)</i> Block next to Kindergarten and behind Public Toilets <i>(Not YSC Asset)</i> Cnr Block Breen Street and Hatchet Street – Crown Land	<ul style="list-style-type: none"> Mowing Spraying Weeds / Garden Beds Minor maintenance Bins Watering 	6 hours	1 x per week	
Depots	1	Wimmera Hwy	<ul style="list-style-type: none"> Mowing Spraying General Maintenance 	3 hours	1 x per week	

Service	Qty	Location	Tasks Undertaken	Time Limit	Frequency	Service Standard
			<ul style="list-style-type: none"> Toilets 			
Transfer Station	1	Murtoa	<ul style="list-style-type: none"> Pushing up scrap metal and green waste Mowing Spraying General tasks to assist transfer operator 	5 hours 4 hours 4 hours	1 x per week 2 x per week 1 x per weekend	Transfer Station Opening Hours: Tuesday 8.00am – 12.00noon, Thursday 1.00pm – 5.00pm Sunday 1.00pm – 5.00pm.



Mowing

Bins

Toilets

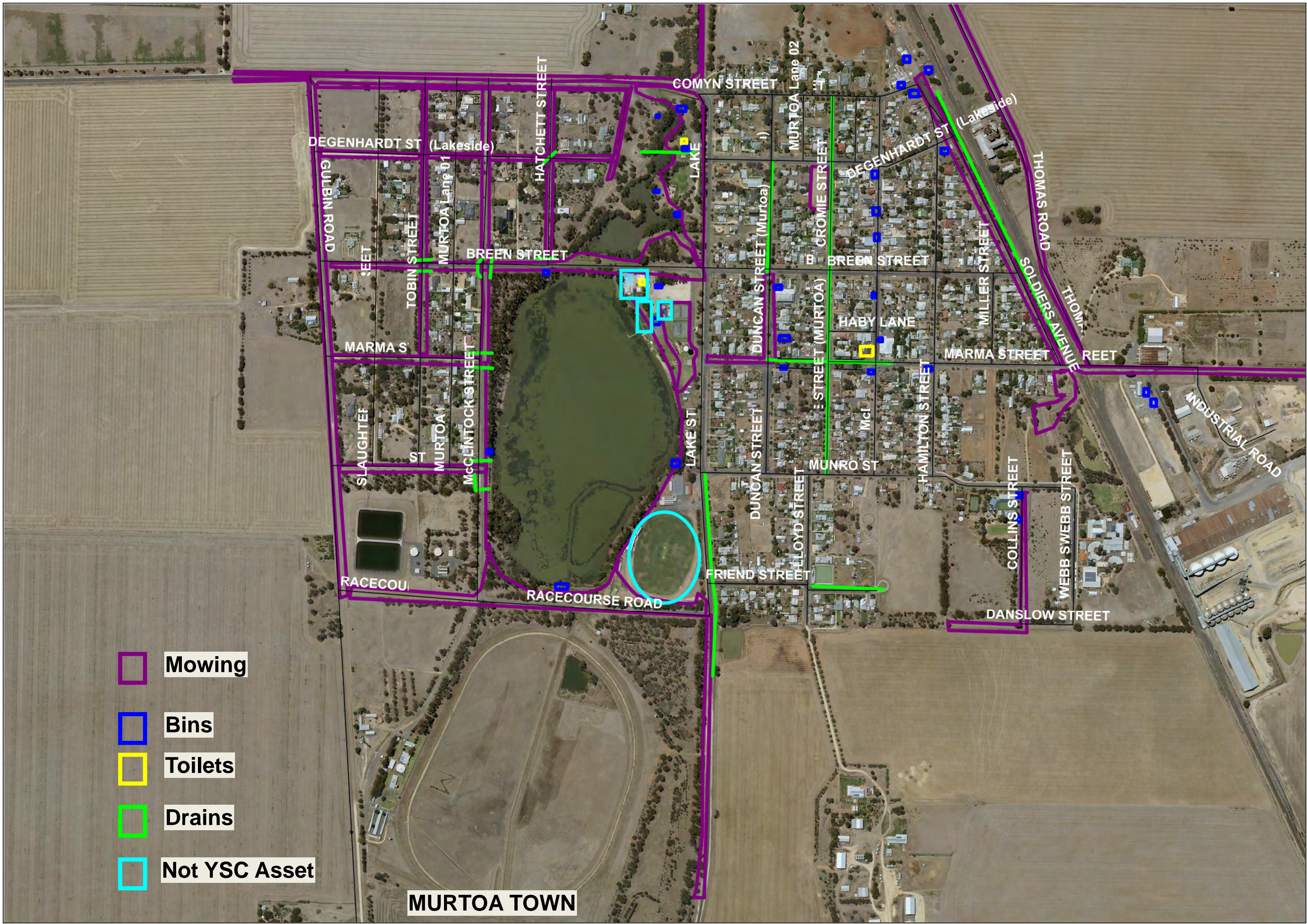
Drains

Not YSC Asset

MURTOA TOWN

- Mowing
- Bins
- Toilets
- Drains
- Not YSC Asset

MURTOA TOWN



3 Rupanyup

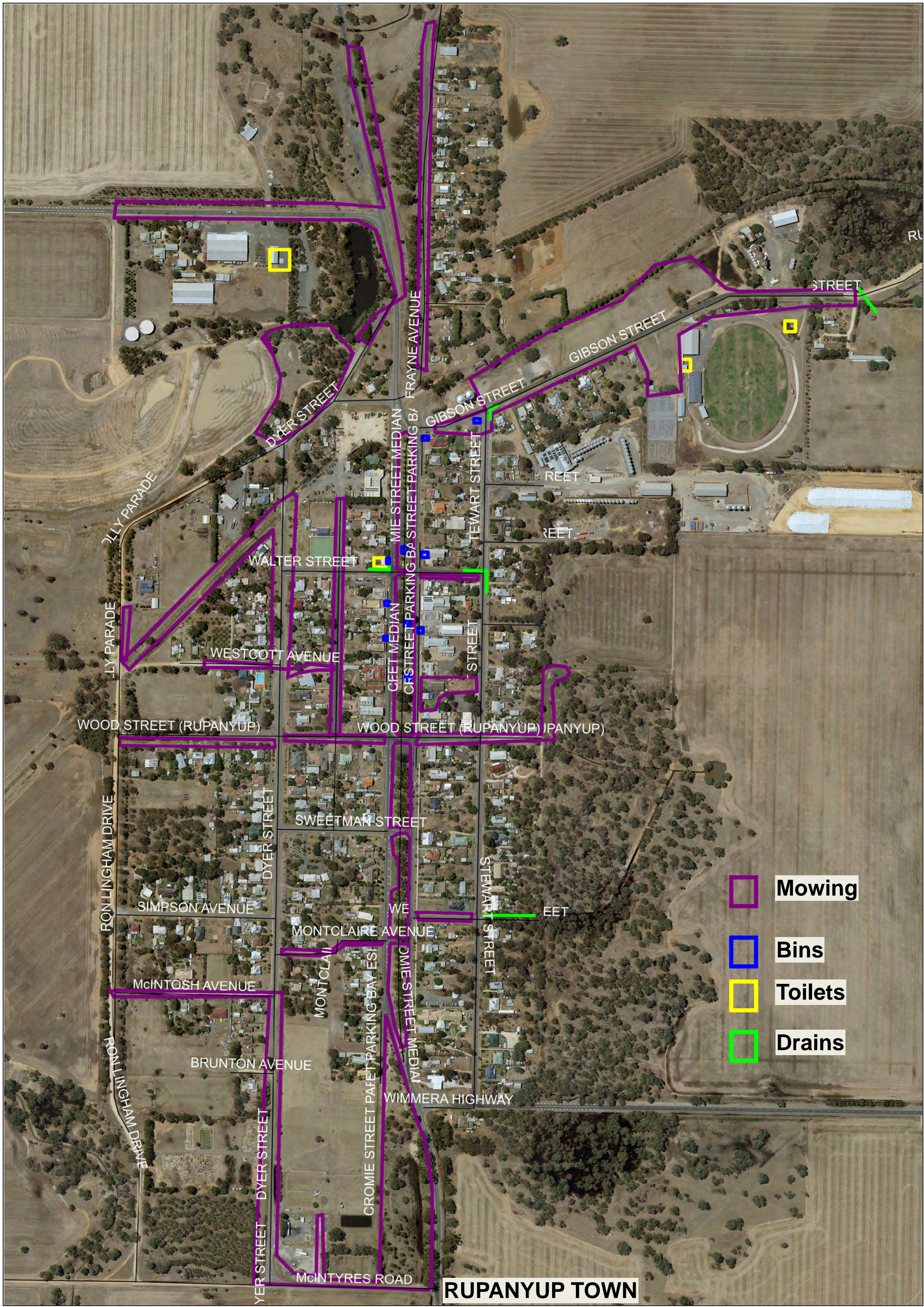
People	Families	Dwellings
545	149	286

Service	Qty	Location	Tasks Undertaken	Time Limit	Frequency	Service Standard
Playgrounds	2	Billabong – Memorial Park (YSC Asset) Recreation Reserve (YSC Asset)	<ul style="list-style-type: none"> • Safety inspections • Spraying • Mowing • Softfall top up • Rubbish collection • Inspection and collection of dog feces, cigarette butts, glass, limbs and shrubs 	2 hours	2 x per week.	
Parks	1	Memorial Park, Connolly Parade & Stawell-Warracknabeal Road	<ul style="list-style-type: none"> • Mowing • Spraying • Weeds • Loose rubbish pick ups 	4 hours	1 x per week	
Street Beautification	1	Township Streets and Town Entrances	<ul style="list-style-type: none"> • Mowing • Mowing YSC / leased vacant blocks and/or land • Spraying • Tree trimming • Over hanging vegetation • Street furniture-maintenance • Roundabouts 	20.5 Hours	1 x per week	Major: Storm damage; Complaints/Requests Minor: Ongoing Maintenance

Service	Qty	Location	Tasks Undertaken	Time Limit	Frequency	Service Standard
Public Amenities	3	Cromie Street <i>(YSC Asset)</i> Billabong – Memorial Park, 89 Wimmera Hwy (Caravan Park amenities) <i>(YSC Asset)</i> Recreation Reserve <i>(YSC Asset)</i>	<ul style="list-style-type: none"> Cleaning Minor maintenance of amenities 	1.5 hour 2 hours	5 x per week 2 x per week (sun)	Recreation Reserve Mondays and Fridays. Memorial Park and Caravan Park is Crown land, YSC is the Committee of Management.
Drainage	1	Walter Street Gibson Street Stuart Street	<ul style="list-style-type: none"> Maintenance Culvert cleaning Blockages Stormwater pump inspection stormwater pits 	10 hours	1 x per week	High Protection: Intensely developed business and industrial where flooding would cause serious damage or inconvenience Medium Protection: Developed residential, other business and industrial areas Low Protection: Sparsely populated residential such as parks, playing fields Obstructions in open drains- as required
Street Cleaning	1	Township	<ul style="list-style-type: none"> Street sweeping Bins Gutters Rubbish 	2 hours	1 x per week	Daily cleaning program – commercial district in the larger towns Monthly cleaning program for all other town streets via plant & equipment

Service	Qty	Location	Tasks Undertaken	Time Limit	Frequency	Service Standard
						CRM System and Community Satisfaction
Streetsweeper	1	Township			6 weekly	6 Weekly program in each zone (central, northern and southern)
Council Owned Buildings / Vacant Blocks	2	<ul style="list-style-type: none"> • 59 Cromie Street (Library) • SES Building • Kindergarten • Senior Citizens Building • Silo Art Block (Rup Future Fund transfer, for housing) 	<ul style="list-style-type: none"> • Mowing • Spraying • Weeds / Garden Beds • Minor maintenance • Bins • Watering 	6 hours	1 x per week	Note, Silo Art Block currently mowed by Contractor
Tennis Courts / Recreation Reserve	1	<ul style="list-style-type: none"> • Recreation Reserve (YSC Asset) 	<ul style="list-style-type: none"> • Mowing • General Maintenance 	0.5 hour	1 x per week	Rupanyup Recreation Reserve Inc. leases site and mows and maintains oval.
Depots	1	Dyer Street	<ul style="list-style-type: none"> • Mowing • Spraying • General Maintenance • Toilets 	1 hours	1 x per week	
Meals on Wheels			<ul style="list-style-type: none"> • Delivering meals on wheels 	As requested		Upon request. However, the requests for assistance increase through school holidays.
Transfer Station	1	Rupanyup	<ul style="list-style-type: none"> • Pushing up scrap metal and green waste • Mowing • Spraying 	0.25 hours	1 x per week	

Service	Qty	Location	Tasks Undertaken	Time Limit	Frequency	Service Standard
			<ul style="list-style-type: none"> General tasks to assist transfer operator 	3 hours 3 hours	1 x per week 1x per week (sun)	Transfer Station Opening Hours:, Thursday 9.00am – 12.00noon Sunday 1.00pm – 4.00pm.



LY PARADE
LY PARADE

RON LINGHAM DRIVE

RON LINGHAM DRIVE

DYER STREET

WALTER STREET

WESTCOTT AVENUE

WOOD STREET (RUPANYUP)

SIMPSON AVENUE

McINTOSH AVENUE

BRUNTON AVENUE

YER STREET

SWEETMAN STREET

MONTCLAIRE AVENUE

MONTCLAIR

McINTYRES ROAD

FRAYNE AVENUE

ME STREET MEDIAN
CEET STREET PARKING BAY EST

WOOD STREET (RUPANYUP) IPANYUP)

WE

DMIE STREET MEDIAN

WIMMERA HIGHWAY

GIBSON STREET

TEWART STREET

STEWART STREET

GIBSON STREET

STREET

- Mowing
- Bins
- Toilets
- Drains

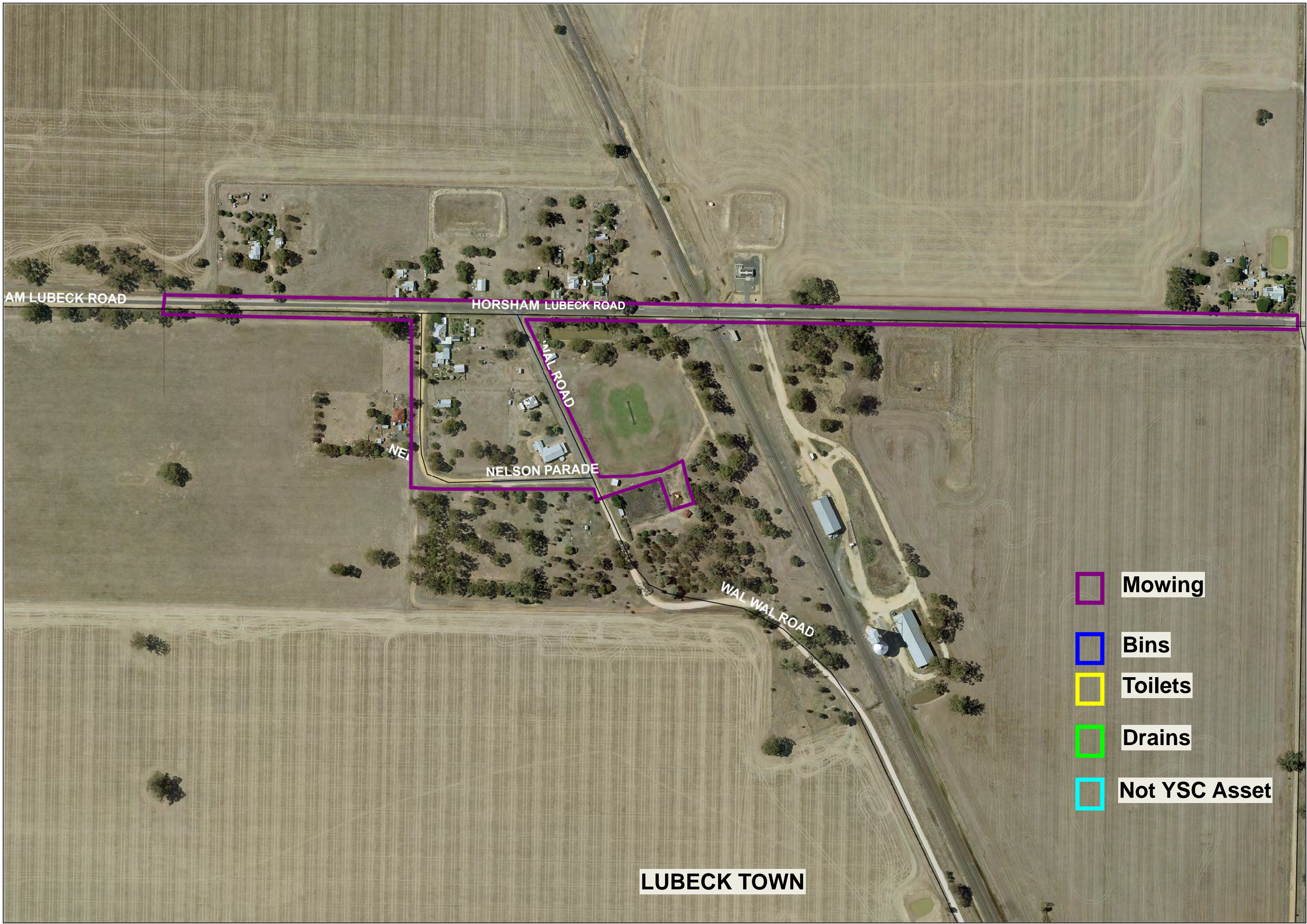
RUPANYUP TOWN

4 Lubeck

People	Families	Dwellings
40	12	20

Service	Qty	Location	Tasks Undertaken	Time Limit	Frequency	Service Standard
Street Beautification	1	Township Streets and Town Entrances	<ul style="list-style-type: none"> Mowing Mowing YSC / leased vacant blocks and/or land Spraying Tree trimming Over hanging vegetation Street furniture-maintenance Roundabouts 	1 Hours	1 x per week	Major: Storm damage; Complaints/Requests Minor: Ongoing Maintenance
Drainage	1	Horsham – Lubeck Road Dam near railway line / Cricket Ground	<ul style="list-style-type: none"> Maintenance Culvert cleaning Blockages Stormwater pump inspection stormwater pits 	0.25 hours	1 x per week	High Protection: Intensely developed business and industrial where flooding would cause serious damage or inconvenience Medium Protection: Developed residential, other business and industrial areas Low Protection: Sparsely populated residential such as parks, playing fields Obstructions in open drains- as required

Service	Qty	Location	Tasks Undertaken	Time Limit	Frequency	Service Standard
Street Cleaning	1	Township	<ul style="list-style-type: none"> Gutters Rubbish 	0.25 hours	1 x per week	Daily cleaning program – commercial district in the larger towns Monthly cleaning program for all other town streets via plant & equipment CRM System and Community Satisfaction
Streetsweeper	1	Township			6 weekly	6 Weekly program in each zone (central, northern and southern)



AM LUBECK ROAD

HORSHAM LUBECK ROAD

NELSON PARADE

NELSON PARADE

WAL WAL ROAD

LUBECK TOWN

-  Mowing
-  Bins
-  Toilets
-  Drains
-  Not YSC Asset