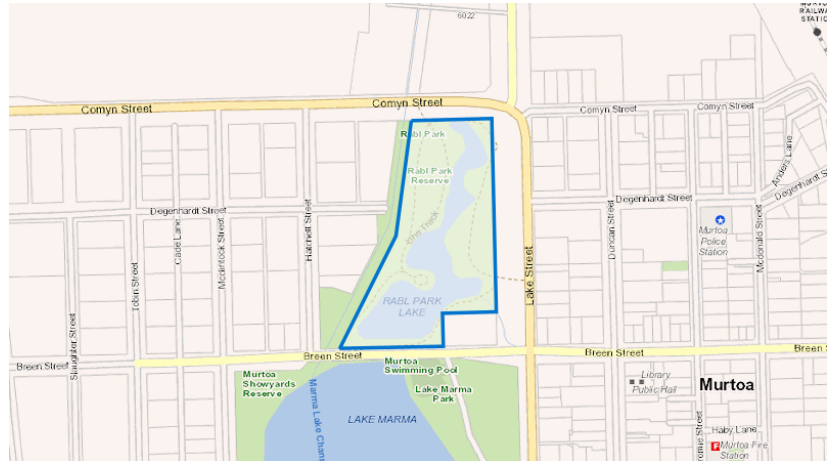


Lake Street Murtoa 3390

Parcel

GovMap



[Click here to view this item on GovMap](#)

Address	Lake Street Murtoa 3390
Land Holders	Yarriambiack Shire Council
Names on Title	Yarriambiack Shire Council
Area	5.19 ha
Land title	Crown
SPI	2~13\PP5566
Municipality	Yarriambiack Shire
Ward	Dunmunkle Ward
Postcode	3390
Suburb	Murtoa
Planning Zones	PPRZ Public park and recreation zone
Heritage	Aboriginal cultural heritage sensitivity area
Demographic and Industry Information	View Yarriambiack Shire Council demographic and industry info
	View Murtoa demographic and industry info
	View Wimmera Southern Mallee region's demographic and industry info
Related Parcels	3~13\PP5566
	5~28\PP5566
	4~28\PP5566

[Learn about GovMap's data sources](#)

[Report a data issue](#)

[Copyright, privacy and disclaimer](#)

The State of Victoria owns the copyright in GovMap. Reproduction of GovMap or information derived from GovMap in any way without the consent of the State of Victoria will constitute a breach of the Copyright Act 1968 (Cth). GovMap and any content derived from GovMap are for general information purposes only. The content does not constitute advice or recommendations and should not be relied upon as such. You should make your own enquiries as to the appropriateness and suitability of the information on this site for your particular circumstances. The State of Victoria does not warrant the accuracy or completeness of GovMap or the information contained therein, and any person using or relying upon such information does so on the basis that the State of Victoria accepts no responsibility or liability whatsoever for any errors, faults, defects or omissions in the information supplied.



Related Properties	45364901
Crown Reserves	
Rabl Park Reserve - Murtoa	
Purpose	Water Supply Regulation And Drainage
Description	Reserve (Cofm - Council) Appointed
Management committee name	Yarriambiack Shire Council
Crown Land Reserve Act Reference	Crown Land (Reserves) Act 1978, Section 4
Reserve ID	0205702
Tenure code	700
Nearest Public Facilities	
Hospital	West Wimmera Health Service (Rupanyup) - 15 km
School	Our Lady Help Of Christians School - 1 km
Ambulance station	Rupanyup Ambulance Station - 15.1 km
Fire station	Murtoa Fire Station - 0.5 km
Police station	Murtoa Police Station - 0.4 km
Health facility	Minyip Maternal And Child Health Centre - 20.3 km
Care facility	Murtoa Kindergarten - 0.5 km
Railway station	Murtoa - 0.7 km
Tram stop	59-Airport West/Matthews Ave (Airport West) - 247.4 km
Bus stop	Mcdonald St/Marma St (Murtoa) - 0.6 km

[Learn about GovMap's data sources](#)

[Report a data issue](#)

[Copyright, privacy and disclaimer](#)

The State of Victoria owns the copyright in GovMap. Reproduction of GovMap or information derived from GovMap in any way without the consent of the State of Victoria will constitute a breach of the Copyright Act 1968 (Cth). GovMap and any content derived from GovMap are for general information purposes only. The content does not constitute advice or recommendations and should not be relied upon as such. You should make your own enquiries as to the appropriateness and suitability of the information on this site for your particular circumstances. The State of Victoria does not warrant the accuracy or completeness of GovMap or the information contained therein, and any person using or relying upon such information does so on the basis that the State of Victoria accepts no responsibility or liability whatsoever for any errors, faults, defects or omissions in the information supplied.